



Department of Earth & Climate Sciences

## Distinguished Alumna Lecture Fall 2016

**Tuesday**

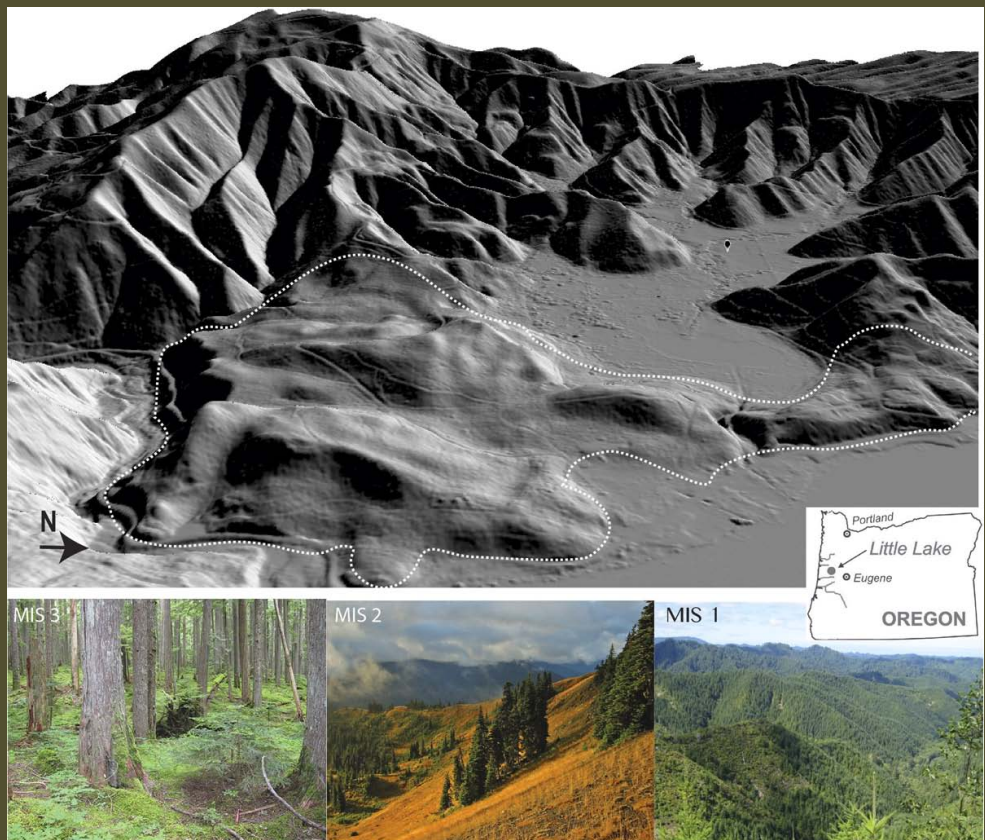
**OCTOBER  
25TH**

**FALL  
2016**

**Thornton  
Room 604**

**1-2 pm**

The geomorphic legacy of glacial intervals in unglaciated terrain:  
insight from the A 50-ky paleo lake core  
in the Oregon Coast Range



**Jill Marshall**

Post-Doctoral Scholar  
U.C. Berkeley